



Sales, Service, & Parts for Street Sweepers, Sewer & Trash/Debris/Leaf Collection Equipment

December 2021



Sweeper Newsletter

(And more!)

10th Edition

Check us out at Armor-equip.com for our Used Truck Inventory!

MISSOURI / ILLINOIS (636) 296-7119 KANSAS (913) 839-1777

FIND US ON FACEBOOK!

Featuring: Model 747 Sewer Equipment Jetter Trailer



This series of hydro-jet cleaners offer a Ford gas engine and Giant triplex plunger run-dry pump as standard equipment, assuring customers of a vast support network, utmost performance, and reliability for the life of the machine. Frames made of fully welded 1/4" x 2" x 6" steel tubing for maximum strength and durability are certified, assuring your adherence to all federal D.O.T. regulations and safety standards. The 747 comes standard with our fully baffled Duraprolene water tanks, to eliminate surging while stopping and turning with water on-board. The rotating hose reel allows operators to work efficiently while positioning themselves out of traffic and other hazards. The NEMA 4 watertight control panel is located on the hose reel and,

is accessible to the operator always. The ECO platform allows the engine to run at 33% less RPM than traditional designs, saving on operating costs due to decreased fuel consumption and creating a safer work environment for operators due to lower noise emission. Whether it is longevity, operator safety, overall value, or available options that you are looking for, the current offering of Series 747 trailer and truck jettors are without peer in the hydro jet marketplace.....HEY, if a TRUCK is more suited to your application, the 747 is offered to mount on your chassis or a factory provided unit with up to 3,000 gallons of water capacity.

Dimensions for the 747 Jetter

- * Length: 19'6"
- * Width: 7'6"
- * Height: 7'6"
- * Max Water Capacity: 700 Gal
- * Axle Configs: Single & Tandem
- * Max Hose Capacity: 1000'
- * Hose Size: 1/2"-1"



Armor's Face with a Name

Meet Jeff Perkins!

Jeff is celebrating a Birthday this month! Jeff works in our StL. Service Dept (for the last 12yrs) and is a man of many hats – Truck Painter, Fabricator, Welder, and Body Mounts. Happy Birthday Jeff, and thanks for being on

Team Armor!



Our **Armor PARTS Departments** proudly stock

OEM PARTS for your immediate needs for these manufacturers:

HEIL – Refuse & Recycling Collection: Automated / Rear / Side / Front Load Vehicles

TYMCO – Sweepers: Parking Lot / Street – Dustless, Airport, Municipal & Contractors

SEWER EQUIPMENT – Truck & Trailer Jetters, Combo Sewer Cleaning Trucks, Vacuum Excavators, Rodders & Bucket Machines, Catch Basin Cleaners, and Easement Units

ODB Xtreme Vac – Leaf / Debris / Landfill Collection Units

WASTEQUIP – Compactors – Refuse / Recycling, and Balers – Cardboard / Aluminum

GALBREATH – Hoists: Roll-off Cable & Hook; Roll-Off Containers: 20/30/40 Cu. Yards

TOTER – Carts: 96/64/34 Gallon Carts; Lids, Wheels, Axles, Caps

Also: **BAYNE** – Cart Tippers; **EAST** – Transfer Trailers; **PIONEER** – Tarps

And, (we can't leave them out) Our **Armor SERVICE Departments**

Offer service to keep your trucks working hard for you this winter season!

Services Offered: * **Welding** (includes aluminum)

* **Electrical & Hydraulic Repair**

* **D.O.T. Inspections**

* **Engine (Diesel/Gas) & Transmission**

* **Brakes & Suspension**

* **Body Mounting**

* **Body Work & Painting**

* **Tarper Installation / Removal**

* **Custom Fabrication**

* **Fleet Maintenance**



Not too Big, not too Small...is a Mid-Sized Street Sweeper what you need??

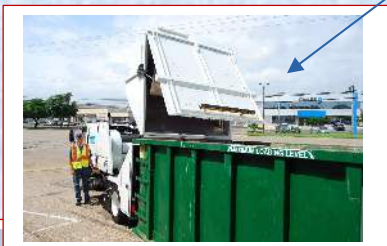
Well, a TYMCO 435 might be JUST RIGHT!

We've touted Tymco for years and years, but the skinny on this 435 is that it is perfect for:

- ➔ Municipal, Construction and Industrial Sweeping
- ➔ Crowned, Cracked and Irregular Paved Roads
- ➔ BMP (Best Management Practice) for Stormwater Quality
- ➔ Porous and Permeable Pavements
- ➔ Airport Runways and Taxiways
- ➔ BMP for Fugitive Dust Control
- ➔ Industrial Facility Cleaning
- ➔ Asphalt and Concrete

Tymco 435 Perks -

- * Large, heavy duty 4.0 cubic yard hopper.
- * **Large dump door allows for quick, easy dumping & cleaning.**
- * Abrasion Protection Package protects sweeper
- * **Heavy duty pick-up head; 36in Gutter Broom.**
- * Up to 150 gallons of water for dust control.
- * **Front Curtain Lifter – allowing for large amounts of materials.**
- * Powerful, 56HP diesel auxiliary engine.



Armor's Bulletin Board

Wishing You Happy Holidays!

Our Armor locations will be **CLOSED** Friday, December 24th & Friday, January 31st.

We've got a BIG 25 Year Work Anniversary Coming Up in January!

Michelle Wolf, our Office Manager, has been part of our **Armor Family** forever, and... she's still smiling!



Our **FACEBOOK** link: facebook.com/armorequipment Soooo easy to find us - we've got lots to share!

Our 2022 Armor Calendars are here!! It's hard to contain our excitement!! #Bringon2022

Give us a jingle to get yours today!

Now HIRING

In our StL, MO location, we are looking for a:

- Diesel Mechanic

In our Olathe, KS location, we are looking for a:

- Shop Foreman

So, if you know of anyone interested in joining our **Armor** family, please contact us at

Tripp@armor-equip.com