

HD CAMERAS



ORION® 3 HD/SD

The ORION® 3 is an HD/SD adaptive zoom camera that can provide a full HD image (1920x1080), an HD image (1280x720) or an SD image (720x576). Once connected to your system, it will automatically detect your system capabilities and output the best quality image that your system will allow.



ORPHEUS® 2 HD

The ORPHEUS® 2.0 HD camera delivers exciting features and incredible HD picture clarity, all while delivering enough clean, bright LED light to illuminate huge areas. Don't settle for low-resolution inspections when you can leverage the quality of your service like never before with the ORPHEUS® 2.0 HD.



ARGUS® 6

The ARGUS® 6 combines many of IBAK's proven features into one single camera head. Full HD resolution, ROTAX® pan mechanism, automatic lighting control system, and one-push auto-focus ensure that you will always have the best possible view, and is equipped for a wide variety of uses.

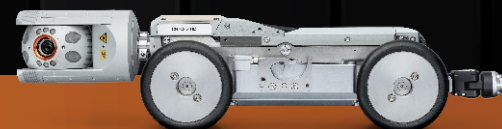
Features	ORION-L 3	ORION 3	ORPHEUS 2 HD	ARGUS 6
Range (Diameter)	4" and up	4" and up	6" and up	8" and up
Sonde Transmitter	In Camera	In Camera	N/A	N/A
Pan & Tilt	●	●	●	●
Zoom	x2 Optical; x16 Digital	x2 Optical; x16 Digital	x10 Optical; x12 Digital	x16 Optical
Auto-Iris	●	●	●	●
Always Upright Image	●	●	●	●
Auto-Focus			●	●
Laser Measurement		●	●	●
Pushrod Capability	●	●		
Lateral Navigation	●			
E-Flip			●	ROTAX
High Definition Video	●	●	●	●



WHY HD?

The time has come to bring dramatically higher visual fidelity to the sewer inspection market. If you are a municipality interested in working with the best video data available, or a contractor wishing to leverage the quality of your services - our line of HD cameras is for you!

The purpose of all CCTV systems is to capture images that allow system owners to make important rehabilitation decisions. Why settle for low-resolution of a standard CCTV system? Give system owners the information they need and avoid blurry, out of focus pictures. Our HD cameras are designed from the ground up to display 100% digital HD, ensuring that you capture clean, crisp video and high-resolution images.



Key Features

- Full Digital HD Resolution (1920x1080p), HD Resolution (1280x720p), and SD Resolution (720x576p)
- 2x Optical Zoom / 16x Digital Zoom
- 12 High Power LEDs, controllable
- Auto-Upright Image Control
- Built-in laser for deformation & diameter measurements
- Panning Range +/- 120°
- Integrated Sonde Location Transmitter
- Optional 3D GeoSense Pipeline & Lateral Mapping Sensor
- Available for Lateral Navigation with additional Kiel Stick attachment

Key Features

- Full Digital HD Resolution (1920 x 1080p)
- 10x Optical Zoom / 12x Digital Zoom
- 10+2 High Power LEDs (2x for illuminating joint gaps) switchable, controllable, temperature controlled
- LaserScan - Continuous Profile Analysis for deformation measurement
- Auto-Upright Image Control
- One-push Autofocus provides sharp image on command
- E-Flip - Correctly oriented picture every 180°
- Pan/Tilt Range of 240° (+/- 120°)
- Optional 3D GeoSense Pipeline & Lateral Mapping Sensor

Key Features

- Full Digital HD Resolution (1920 x 1080p)
- 10x Optical Zoom / 16x Digital Zoom
- 8 white Power-LEDs, 6 white 5 mm LEDs for illuminating joint gaps
- Automatic Lighting Control System eliminates excess image noise
- ROTAX® Always Upright Image Correction
- Built-in laser for deformation & diameter measurements
- One-push Autofocus provides sharp image on command
- Panning Range +/- 120°
- Optional 3D GeoSense Pipeline & Lateral Mapping Sensor